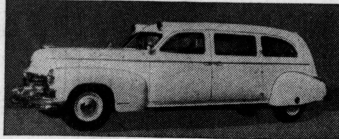


# AMBULANCE SERVICE

## EXCLUSIVELY

LATEST CADILLAC & PACKARD EQUIPMENT

24-Hour  
Service



No Distance Too Great  
COUNTY - STATE - NATIONWIDE

Arrangements Made for  
BOAT, TRAIN & AIRPLANE TRAVEL  
RED CROSS TRAINED

ALL AMBULANCES FULLY EQUIPPED

DIAL  
6-6434

# SUPERIOR AMBULANCE SERVICE

WE ARE NOT CONNECTED WITH ANY INSTITUTION  
STRICTLY A PRIVATE AMBULANCE SERVICE

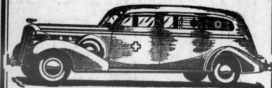
LOUIS J. WARREN

1221-30TH STREET

WALTER C. KUNZ

DIAL 2-0755 FOR  
AMBULANCE

"The Green Ambulance"



FULLY EQUIPPED  
HEATED AND AIR COOLED

Out of Town Trips  
Solicited  
At Special Rates

TRAINED ATTENDANTS

24-HOUR SERVICE

DAGGETT  
AMBULANCE SERVICE

# SETTER'S TREASURE PLACE



FURNITURE  
GLASS  
CHINA

AND ANY  
OLD THING

If We Don't Have It  
We Get It

1401 G ST.

Phone 2-4518

Open Only in P. M.

## Ambulance Service

**CLARK BOOTH & YARDLEY**  
MODERN AMBULANCE SERVICE  
50 Years of Service Without an Injury  
to Any Patient  
Latest Equipment — Trained Attendants  
Moderate Rates for Out-of-Town Calls  
24-HOUR SERVICE  
917 H. . . . . 3-1731

**DAGGETT AMBULANCE SERVICE** 506 O. . . . . 2-0755  
(See Advertisement This Page)

**MORSE IRVING G**  
In Yolo County  
THOUGHTFUL SERVICE  
Modern Equipment - Moderate Rates  
General Long Distance Towing  
24-HOUR SERVICE  
1616 Vermont W Sacramento. . . . . 2-4037

**SUPERIOR AMBULANCE SERVICE**  
1221-30TH . . . . . 6-6434  
(See Advertisement This Page)

**Ammonia**  
Wicht Extract & Syrup Co 126 K. . . . . 3-2927

**Amplifiers**  
See Sound Systems & Equipment

**Amusement Devices**  
Ace Novelty Co 1223 Q. . . . . 3-5264  
Irwin Don Enterprises 411 Santiago N Sacto. . . . . 9-3210  
Ludwig Harry 618 1/2 J. . . . . 3-0044  
Rex Novelty Co 927-4th. . . . . 3-6939  
Sacto Amusement Assn 517 California. . . . . 2-5281  
Sacto Novelty 117 E Baseline N Sacto. . . . . 9-0152  
Sacto Novelty Co Ochsner Bldg. . . . . 2-5263

**Amusement Places**  
**PLAYDIUM THE**  
FUN FOR ALL  
100 Various Kinds of Games  
AIR-O-MATIC RIFLE SPORT  
ARCHERY  
VOICE RECORDINGS  
1220 K. . . . . 3-5565

Red Barn Dancing Lwr Msvl Rd. . . . . 9-9825  
Sportland 619 K. . . . . 4-0894

**Ant Control—See Exterminating**

**Antiques—Dealers**  
**BAR NONE RANCH**  
Pennsylvania Dutch & Victorian Furn  
Dishes-Figurines-Lamps-Musts  
Myrtle Av . . . . . 9-0088  
**CHELSEA HOUSE ANTIQUE SHOP**  
Antiques of Distinction  
2322 K. . . . . 3-8325

**HOBBY SHOP**  
WE BUY & SELL  
ANTIQUES & OLD BRASS  
COLORED & PATTERNED  
GLASS  
2119 F. . . . . 3-5621

**READER'S NOOK**  
Books—China—Pattern Glass Etc  
962-39th . . . . . 6-5336  
Tower Library  
Glassware—China—Pictures & Silverware  
16th & Broadway. . . . . 3-1880  
Treasure Place 1401 G. . . . . 2-4518  
(See Advertisement This Page)

**Antiques—Repairing & Restoring**  
Lawrence Furniture & Cabinet Mfg 2800 V. . . . . 6-6606

## Apartments

Adair Apts 928 H. . . . . 3-9307  
Alo Apts 912 O. . . . . 3-9573  
Altho Apts 1426-7th. . . . . 3-9429  
Arndel Marie 1220-22d. . . . . 3-9966  
AUSLENDER APTS 1500-15th. . . . . 3-9587  
Bachman Paul T 2200-21st. . . . . 3-9936  
Bancroft Apts 1216-7th. . . . . 3-9445  
Bel-Vue Apts  
Bard George F 1220 H. . . . . 3-9537

2's & 3's Furnished—Newly Insulated  
Fridaire System—By Week Or Month  
1123-8th . . . . . 3-9962  
Bergene Geo 912 O. . . . . 3-9532  
Berkshire The 1126 1/2-6th. . . . . 2-9493  
Boatright Ora Mrs 724-7th. . . . . 3-9786  
Bon Air Apts 1227 1/2 J. . . . . 3-8346  
Brady Joseph 1515-16th. . . . . 3-9408  
Brentwood Apts 2204 H. . . . . 3-0296  
Brown Apts 1618 O. . . . . 2-9349  
Caskey E 600 P. . . . . 2-9437  
Cazadero Apts 703-8th. . . . . 3-3072  
Clayton Jennie L 1511 O. . . . . 2-9807  
Coberly C L 2526 N. . . . . 6-7293  
Colonial Apts

Housekeeping Apartments—Transient Rooms  
700 L. . . . . 2-9334  
Cordons Apartments 914-23d. . . . . 3-9532  
Corum Apts 22d & J. . . . . 3-0204  
Crisler Apts 2425 I. . . . . 3-0702  
Croze Apts 1719 P. . . . . 2-9488  
Croze Apartments 602-17th. . . . . 2-9325  
Dauger Ruth M 1012 H. . . . . 2-9465  
Dauger Ruth M Mrs 727-9th. . . . . 3-9819  
El Cortez Apts 1110-11th. . . . . 2-1432  
El Nido Apts  
Otto Buehler  
603-11th . . . . . 2-9815

Federal Apts 721 1/2 H. . . . . 2-2228  
Fountain Gardens Apts 2227 N. . . . . 3-6342  
Francesca Apts 12th & L. . . . . 3-9575  
Frank's Apartments 1118-7th. . . . . 2-9545  
George Apartments 1490 H. . . . . 3-9545  
Gill Apts 1821 Q. . . . . 2-9930  
Gill Apts 1531 I. . . . . 2-9885  
Glendale Apts 608 H. . . . . 2-9565  
Granada Apts 404-12th. . . . . 3-9710  
Ingram Apts 1424-14th. . . . . 2-0202  
Isenhour Apartments 811 1/2-20th. . . . . 3-9658  
Jefferson Apts 1315-17th. . . . . 2-9458  
Johnson Apts 925 P. . . . . 3-9395  
Johnson J M Auburn Blvd. . . . . 9-0064  
L'Orchard Apts 1314-9th. . . . . 3-9975  
Langstaff Annex 1420 O. . . . . 3-3511  
La Rosa Apts 504-10th. . . . . 3-9497  
Laupe Apts 1325 K. . . . . 2-7946  
La Verne Apts 1701 Q. . . . . 2-8994  
Lenore Apts 1830 N. . . . . 2-9857  
Leonard Apts 1021 H. . . . . 2-6281  
Lewis Apts 1100 N. . . . . 2-6564

Low Apts  
Housekeeping Apartments—Transient Rooms  
1503 H. . . . . 3-9443  
Lucerne Apts 1010-11th. . . . . 2-9378  
Maxtin Apts 1819 K. . . . . 2-9623  
Mattox Geo 2609 G. . . . . 2-9877  
Maydestone Apts. 15th & J. . . . . 2-9541  
McNeely Apts 910 O. . . . . 2-9964  
Miller L W 1107 I. . . . . 3-9956  
Modern Manor Apartments 3360 H. . . . . 6-4545  
Modern Manor 2413 Capitol Av. . . . . 2-9424  
Nokomis Apts 801 P. . . . . 2-9679

**OLD TAVERN APARTMENTS**  
Mrs Elsie Martin Mgr  
1225-28th . . . . . 5-9723  
Park Mansions Hotel Apts 1225-14th. . . . . 3-9656  
Park Vista Apts 1326 N. . . . . 3-9753  
Parkview Apartments 1029 K. . . . . 3-8851  
Peterson W L 2504 1/2 J. . . . . 2-9344  
Pierson Apartments 2517 J. . . . . 2-9852  
Pleasant Apts 714-9th. . . . . 3-9671  
Ramsey Apartments 619-10th. . . . . 2-9390  
Ramsey Apartments  
G K Ramsey  
601-10th . . . . . 2-9598

Ray Apartments 812-9th. . . . . 2-9653  
Raymond Apts 315 1/2 H. . . . . 2-9653  
Raymond Apts 1215-7th. . . . . 3-9409  
Sacramento Apts 2007 J. . . . . 3-9622  
St Clare Apts 1710-10th. . . . . 3-0087  
St Francis Apts 821-10th. . . . . 3-9309  
Senator Apts 817-25th. . . . . 3-7367  
Shuman Apts 1605 P. . . . . 3-9088  
 Snyder Lella Mrs  
Bachelor Apartments Only  
1811 H. . . . . 2-9660  
Tatum Ethel 1900 1/2-3d. . . . . 3-1490

Thayer Apts 1228 N. . . . . 3-9567  
University Manor 2146 Sutterville Rd. . . . . 5-9832  
Valencia Apts 1317 O. . . . . 3-4748  
Veress Apts 2031 I. . . . . 3-9774  
Villa Marquis 800-17th. . . . . 3-1672  
Virginia Apts  
Housekeeping Kitchennette Apartments  
710 L. . . . . 2-9793  
Wallis Apts 1300-9th. . . . . 3-9803  
Wilcox Ethel Mrs 1300 P. . . . . 3-9697  
Wintlow A L 1900 Capitol Av. . . . . 3-9548  
Wright Manor Apts 1501-15th. . . . . 2-3449  
Yale Apartments 1010 1/2 E. . . . . 3-9950

**Appraisers**  
Cubberley W J 2958-35th. . . . . 5-5405  
Groves Irwin N & Son 909 1/2-8th. . . . . 2-2627

**Architects**  
Barovetto & Thomas 620 1/2 I. . . . . 2-8362  
Brunckhorst Jas F Garfield Av. . . . . 9-2215  
Dean Chas F California State Life Bldg. . . . . 4-0768  
Devine Harry J 1012 J. . . . . 3-8725  
Franklin Clifford N 1739-9th Av. . . . . 2-5931  
Goodpastor Herbert E Mitau Bldg. . . . . 2-5659  
Koblik Wm Calif Fruit Bldg. . . . . 3-7878  
Sandler Eugene J 2749-10th Av. . . . . 3-2940  
Sellen George C California State Life Bldg. . . . . 3-6331  
Starkford Gordon Forum Bldg. . . . . 2-2291  
Starks Leonard F Native Sons Bldg. . . . . 3-9786

**Architects—Landscape**  
See Landscape Architects

**Armatures—Repairing & Rewinding**  
Fraser Electric 1230 J. . . . . 2-6607

**Army & Navy Goods**  
Army & Outing Store 1222 J. . . . . 2-9560  
(See Advertisement This Page)

**MAX'S CLOTHING STORE**  
SEE MAX FIRST  
ALL OUR MILITARY GOODS  
AT GREATLY REDUCED PRICES  
Come In And Be Convinced  
OPEN EVENINGS & SUNDAYS  
616 J. . . . . 3-5589

Max's Clothing Store 616 J. . . . . 3-5589  
(See Advertisement This Page)  
Reliable Auto Supply 1313 J. . . . . 4-0685  
Rich's Clothing Store 522 J. . . . . 4-0760

**Art Galleries**  
Crocker Art Gallery 216 O. . . . . 2-6087

**Art Needlework**  
Weinstock-Lubin & Co 12th & K. . . . . 3-6881

**Art Schools—See Schools**

**Artists**  
Doering Hope 3701-62d. . . . . 6-9607  
LENOIR W S Mitau Bldg. . . . . 2-6277  
Mills Anne 2208-12th. . . . . 2-1463  
**PANKEY H W**  
Complete Art Service  
916-11th . . . . . 2-3645  
Strader Art Financial Bldg. . . . . 2-5957

**Artists' Materials—Retail**  
See also Drawing Materials  
Capital Stamp & Stationery Co 1329 J. . . . . 2-0809  
Pittsburgh Plate Glass Co-Pittsburgh Paints  
1131 J. . . . . 2-3673  
Sherwin Williams Paint Co 1024 J. . . . . 3-2013  
Trickey M N Paint Co 1716 L. . . . . 2-4461

For best results with your telephone—  
please make sure of the number (if in  
doubt, consult the Telephone Directory);  
then speak with lips close to the mouth-  
piece, using your natural tone of voice.

# ARMY and OUTING STORE

Full Line of  
ARMY & NAVY UNIFORMS  
INSIGNIAS - CHEVRONS  
GARRISON CAPS - SHOES - Etc.  
**CAMPERS' EQUIPMENT**  
TENTS - SLEEPING BAGS  
COTS - CAMP STOVES - Etc.

Dial **2-9560**  
Barney Freidberg 1222 Jay

# ARMY GOODS

SEE MAX FIRST  
"We Carry a Full Line of Military Goods"  
Pants - Shirts - Ties  
Overseas Caps - Garrison Hats  
Chevrans - Raincoats - Insignias, Etc.  
OPEN EVENINGS & SUNDAYS

Dial **3-5589**  
**MAX'S CLOTHING STORE**  
616 Jay St.

# U. S. ARMY SURPLUS & RECLAIMED MERCHANDISE

Farmers - Contractors - Hunters  
  
The Most Complete  
Stock in Sacramento  
**RELIABLE AUTO SUPPLY**  
1313 J Phone 4-0685

**Art Galleries**  
Crocker Art Gallery 216 O. . . . . 2-6087

**Art Needlework**  
Weinstock-Lubin & Co 12th & K. . . . . 3-6881

**Art Schools—See Schools**

**Artists**  
Doering Hope 3701-62d. . . . . 6-9607  
LENOIR W S Mitau Bldg. . . . . 2-6277  
Mills Anne 2208-12th. . . . . 2-1463  
**PANKEY H W**  
Complete Art Service  
916-11th . . . . . 2-3645  
Strader Art Financial Bldg. . . . . 2-5957

**Artists' Materials—Retail**  
See also Drawing Materials  
Capital Stamp & Stationery Co 1329 J. . . . . 2-0809  
Pittsburgh Plate Glass Co-Pittsburgh Paints  
1131 J. . . . . 2-3673  
Sherwin Williams Paint Co 1024 J. . . . . 3-2013  
Trickey M N Paint Co 1716 L. . . . . 2-4461

For best results with your telephone—  
please make sure of the number (if in  
doubt, consult the Telephone Directory);  
then speak with lips close to the mouth-  
piece, using your natural tone of voice.

Young Women  
There May Be  
Employment Opportunities  
and a  
PERMANENT POSITION FOR YOU  
with  
**THE PACIFIC TELEPHONE  
AND TELEGRAPH COMPANY**